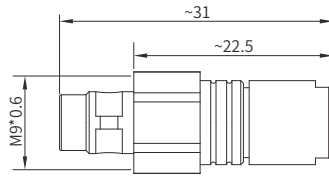


### PMG Straight Plug With Cable, Threaded Joint

- Connector series: PMG
- Contact: Male
- Locking type: Screw Locking
- Orientation type: Straight
- Part No.: PMG.0R.XXX.CLACXX
- Mated with: SRG.0R.XXX.CLL



Note: "X" refers to part number definition on page 126

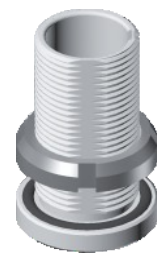
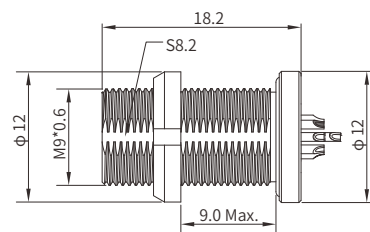
### General Information

Ambient temperature:	-20°C ~ + 80°C
Endurance:	≥3000 cycles
Insulator:	PEEK
Connector contacts:	Brass with gold plated
Coupling nut/screw:	Brass with Cr plated

Housing:	Brass with Cr plated
Insulator resistance:	≥100MΩ
IP rating:	IP 68
Shielding efficiency:	at 10MHz>75dB/at 1GHz>40dB
Salt spray corrosion test:	>144h

### SRG Fixed Straight Socket, Threaded Joint

- Connector series: SRG
- Contact: Female
- Locking type: Screw Locking
- Orientation type: Straight
- Part No.: SRG.0R.XXX.CLL
- Mated with: PMG.0R.XXX.CLACXX



Note: "X" refers to part number definition on page 126

### General Information

Ambient temperature:	-20°C ~ + 80°C
Endurance:	≥3000 cycles
Insulator:	PEEK
Connector contacts:	Brass with gold plated
Coupling nut/screw:	Brass with Cr plated

Housing:	Brass with Cr plated
Insulator resistance:	≥100MΩ
IP rating:	IP 68
Shielding efficiency:	at 10MHz>75dB/at 1GHz>40dB
Salt spray corrosion test:	>144h

Note: Panel cut-out (page 164)